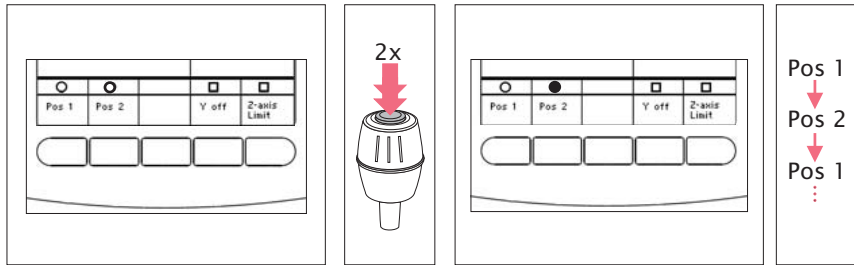
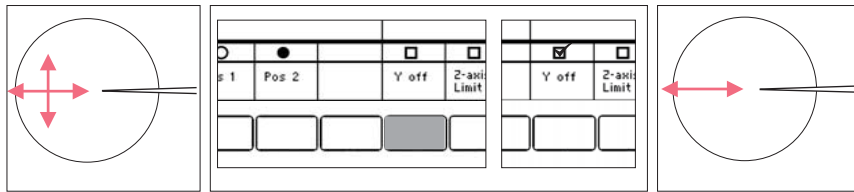


### 12. Go to positions by double click (Jstick key 2x = Switch position)

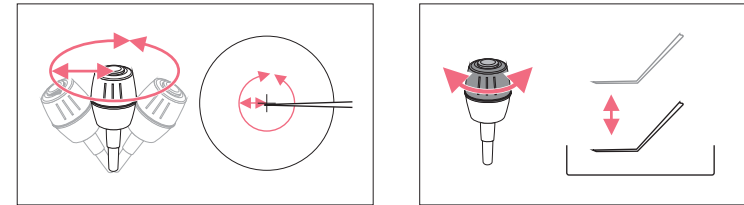


### 13. Use of the Y off - function

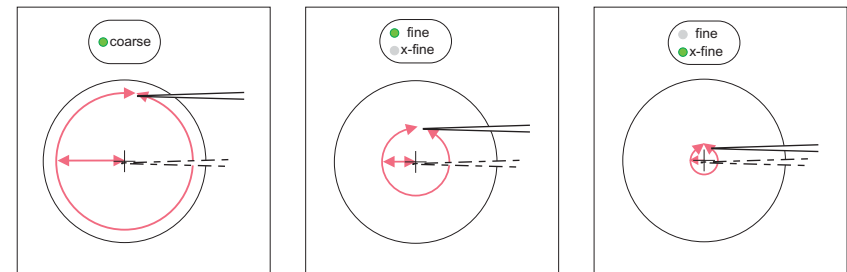


**!** These short instructions are a supplement to the operation manual and not a substitute. Read the operating manual before using the micromanipulator for the first time!

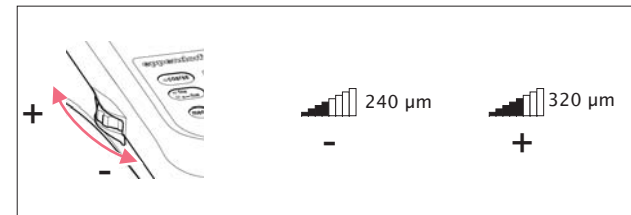
### 1. Movement control via joystick



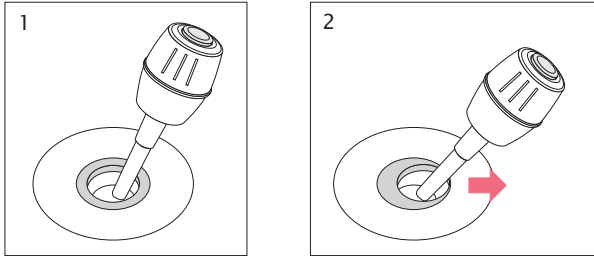
### 2. Working area settings using keys



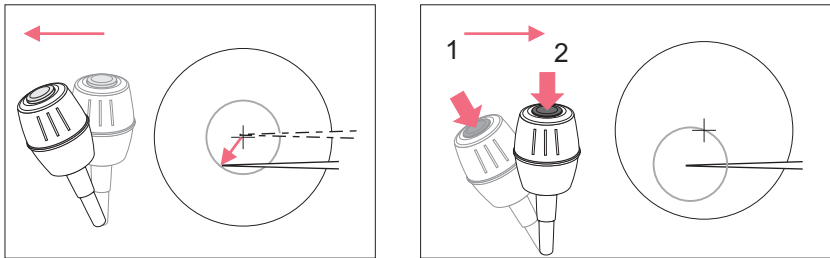
### 3. Working area adjustment using wheel



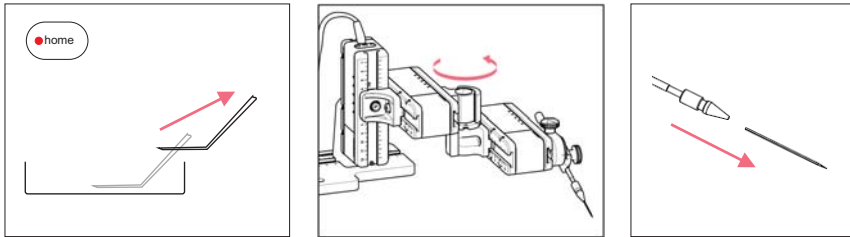
- 4.1 Moving the joystick within the inner area: Direct movement (proportional)  
4.2 Moving the joystick against the outer ring: Dynamic movement



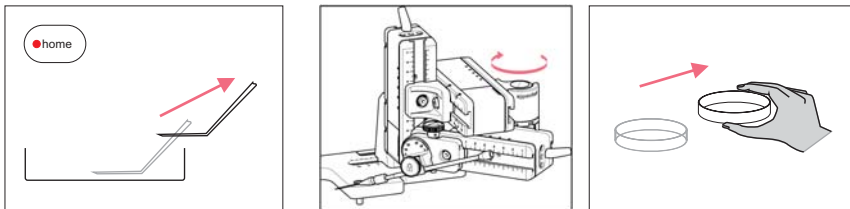
5. Press the joystick key to declutch capillary movement



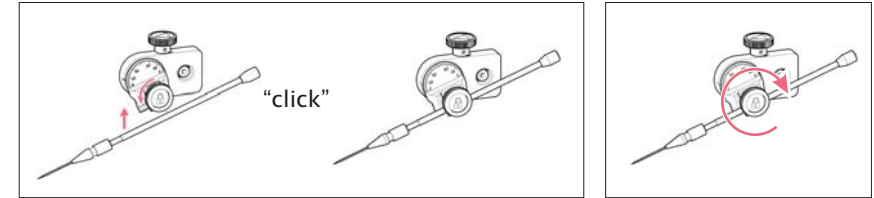
6. Capillary exchange by pressing home



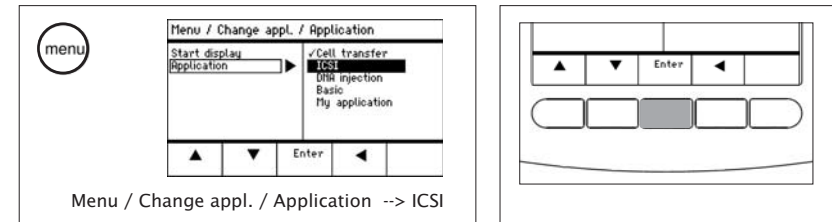
7. Sample exchange by pressing home



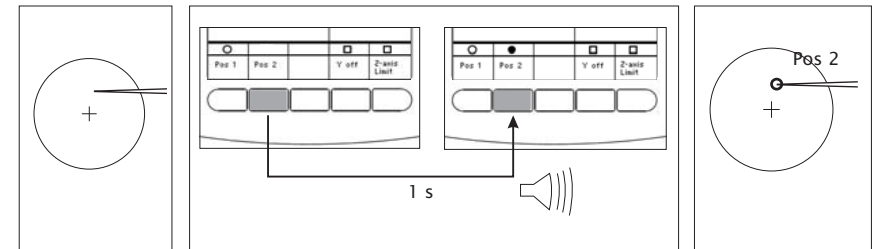
8. Mounting and fixing the capillary holder



9. Change the application via menu



10. Save the position by pressing softkey (1 s)



11. Go to positions using softkey

